



# Tree Protection Ordinance Update

# The Tree Protection Ordinance Protects 3 Categories of Trees:

- Significant —

1. Live Oak
2. White Oak
3. Eastern Red Cedar
4. Southern Magnolia
5. Bald Cypress w/ 4" DBH or more.

- Protected —

1. Significant trees, as defined in 903.C - *Significant Trees*;
2. Trees planted or retained to meet the requirements of section 902 - *Landscape Regulations*;
3. Wax Myrtles & Crepe Myrtles designated as "tree forms" on an approved landscape plan;
4. Any tree > 3 inches DBH located on City-owned property including any public right-of-way;
5. Any Sycamore & Sweet-Gum w/ a 12-inch DBH or more.
6. Any Pine w/ a 18-inch DBH or greater (except Japanese Black Pine w/ a caliper of 2 inches or more).
7. All other species of trees 5 inches DBH or more.

## Landmark Trees -

Common Name	Diameter at Breast Height (DBH)
Eastern Red Cedar	30"
Southern Magnolia	30"
Live Oak	25"
Laurel Oak	30"
White Oak	25"
Willow Oak	30"
Red Maple	36"
Bald Cypress	30"
American Holly	20"
Flowering Dogwood	15"
Hickory (except Pecan)	36"



# *Criteria for Issuance of Landmark Tree Removal Permits.*



Landmark trees may only be removed if:

- They are hazardous, diseased or infectious.
- They are in decline as characterized by progressive dieback of branches & approved by a certified arborist
- By Special Exception as determined by BZA.

Tighter restrictions were placed on the removal of Landmark trees w/ the Zoning re-write, which lowered the DBH of some of the Landmark trees to include a larger population of those species in that category.

Trees within these categories may only be removed after they have been visually inspected.

Tree Removal Permits. It is unlawful to remove or destroy a protected tree or landmark tree w/out obtaining a protected tree or landmark tree removal permit.





A detailed tree survey is required to be submitted and reviewed for any site where tree or root disturbance may occur

All applications for clearing, grubbing, grading, building, or demolition shall include a Tree Protection Zone Plan (TPZ). The TPZ shall be designed to protect the trees and their roots on site as well as those on neighboring properties.



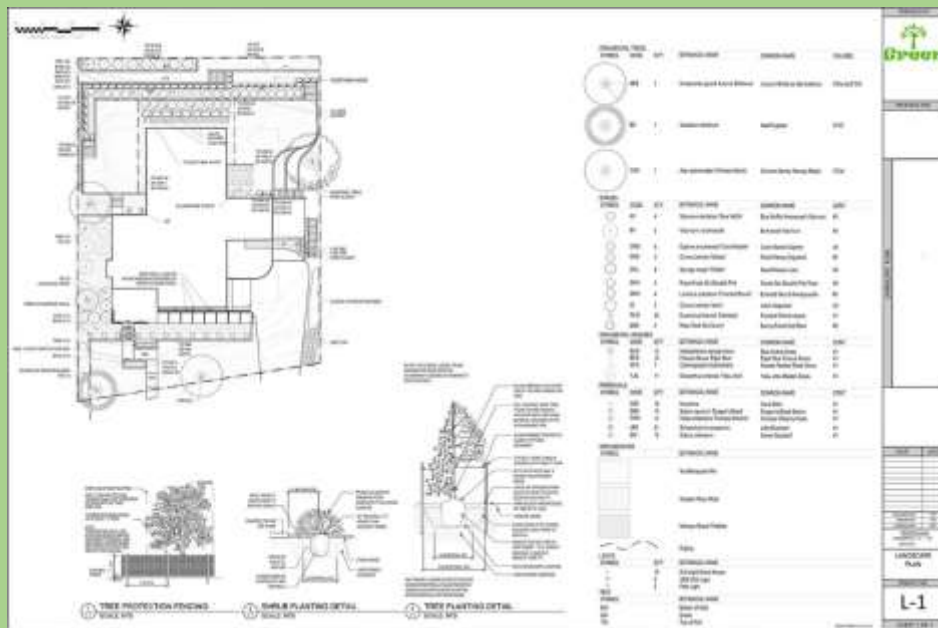
# Forestry Management Plan

The owner of a land parcel 5 acres or more may submit, for approval by the Zoning Administrator, a Forestry Management Plan drafted by a state registered forester. The intent of the Forestry Management Plan shall be the long-term maintenance of the forest. The Zoning Administrator may issue an annual Forestry Management permit based on the specifications contained in the approved Forestry Management Plan. Violations of the Forestry Management Plan are subject to the penalties delineated in 903.N-Penalty. Lapses in the annual Forestry Management permit result in the property being regulated by all of section 903.G-Tree Removal Permits.

# Forestry Management Plan

- Statement of landowners goals and objectives.
- Location and identification of the tract.
- Protection and maintenance.
- Stand descriptions and inventory data.
- Forest management activities.
- Forestry Management plans have been in place on the larger tracts of land since the early 1900's.

All trees on a submitted Landscape plan shall be reviewed and approved to be of an acceptable species for the site and not to interfere with surrounding site conditions





During construction tree protection is required to be installed before any site disturbance can occur

Tree Protection During Clearing, Grubbing, and Development. Prior to the commencement of any site clearing or vegetation alteration, other than mowing, a clearing/grubbing permit shall be obtained from the Construction Services Department.

Detailed plans for temporary wooden barricades or orange fencing that must be erected before the commencement of any site clearing and grading. The fence is to be a minimum of four feet high above grade with a rigid frame of 4" X 4" posts and 22" X 4" rails at 2' and 4' above grade and across the top.



Any Protected trees to be removed on any site must be replaced in accordance with the City of Myrtle Beach Mitigation Policy

- All protected trees removed shall be replaced in accordance with the following criteria:

Tree Removed	Replacement Tree
Up to 4" DBH	One 2.5" caliper tree
Over 4" DBH up to 8" DBH	Three 2.5" caliper trees
Over 8" DBH up to 14" DBH	Four 2.5" caliper trees
Over 14" DBH	Five 2.5" caliper trees



# Pruning of Protected and Landmark trees

Pruning shall not interfere w/ the design intent at the original installation.

1. Tree pruning shall be accomplished in accordance with the procedures set forth in the ANSI A300 (Current Edition) standards.
2. The use of unnatural pruning techniques is considered an unauthorized removal unless the tree is designated on approved landscape plan to be shaped or formed in an unnatural pattern or to be maintained at a certain height.





# Things to Consider

- Our development regs are based on the 25-year storm event.
- Construction Services performs per-permit tree protection inspections.
- The type of fencing used for tree protection.
- The size & species of significant, protected & landmark trees.